



West Exmoor Federation

'Educating with love, for life in all its fullness'

Spring Term 1 2024 - Phase Newsletter

Quick Reminders

Diary Dates

02.01.24	Children return to school	23.02.24	Forest School begins for Kentisbury Y1
04.01.24	Forest School resumes for YR	11.03.24	Y5/6 Residential to Okehampton YHA
05.01.24	Forest School begins for Lynton Y2	18.03.24	Lynton Y3/4 Residential to Pinkery
18.01.24	YR Trip to Rosemoor	20.03.24	Parracombe Y3/4 Residential to Pinkery
23.01.24	Streams Trip to Yeo Valley Woodland	27.03.24	Parracombe & Kentisbury Easter Service tbc
26.01.24	Young Buds Trip to Yeo Valley Woodland	28.03.24	Lynton Easter Service tbc
09.02.24	End of Half Term	29.03.24	End of Term
19.02.24	Children return to school	15.04.24	Children return to school
22.03.24	Forest School begins for Parracombe Y5	03.07.24	Advance Notice - Summer Production at The Landmark, Ilfracombe

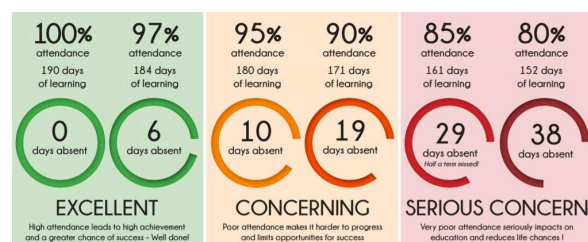
Mrs Peacock

Dear Parents/Carers

COLLECTIVE WORSHIP

This half term we will be considering our CARIS value of achievement. We will be revisiting the Parable of the Sower and thinking about what we need in our 'good soil' to enable us to grow and flourish. We will also be thinking about the stoney ground and thorns that we encounter, how these can sometimes inhibit us from reaching our goals and how we can endeavour to avoid and/or overcome them. Our musician for the half-term will be Hans Zimmer and will be exploring his life story and some of his most recognisable compositions. We will also be learning about Dr Maggie Aderin-Pocock, our courageous advocate for this half term - she has broken so many stereotypical moulds and is a wonderful role-model and inspiration for many young people today.

ATTENDANCE



As a new term begins, I would like to remind parents/carers of the importance of ensuring that all children maintain a high standard of attendance throughout the year. I would also like to thank those parents/carers who have ensured that their children have achieved good attendance so far this year. At present the attendance figures for each school are as follows: Lynton (97.8%); Parracombe (96.7%); Kentisbury (96.3%). The national target for attendance is 97% with the national average for primary schools

currently sitting at 95%, so it is good to see that we are either at or close to the target and, at the moment, exceeding

Nurturing Curiosity, Achievement, Respect, Inspiration and Support (CARIS)

the national average. Good attendance is the essential foundation to positive outcomes for our children; missing just a few days of school can have a negative impact upon learning. If your child is genuinely unwell they should not come to school, but all other absences should be kept to an absolute minimum. Requests for exceptional absence will only be authorised in accordance with our Attendance Policy and requests for absence in order to take advantage of cheaper term time holidays, celebrating birthdays, meeting up with relatives, going shopping, etc, will not be authorised. Unauthorised absences will be reported to the Local Authority and could result in a fine being issued. In this event, each parent is issued a fine of £60, which rises to £120 each if it is not paid within 21 days. If the fine is not paid after 28 days, prosecution may follow. We will be continuing to monitor attendance on a regular basis, including punctuality, and will be arranging to discuss with you your child's attendance should it fall below 96%.

LYNTON SIAMS INSPECTION

Towards the end of last term, we welcomed David Hatrey to Lynton School to conduct a Statutory Inspection of Anglican and Methodist Schools (SIAMS) inspection. This is much like an Ofsted Inspection but with a focus upon how the Christian Vision and Values of our school shapes our provision, and how effective this is in enabling our children to flourish, whether or not they are of Christian faith, other faith or of no faith.

We are delighted to report that the inspection found our school to be living up to its foundation as a Church School. Particular high-lights included how David felt that our school was a 'warm, caring 'family' where all treat one another with a high degree of dignity and respect'. The report notes how pupils have a 'thoughtful understanding of diversity' and how we successfully promote a 'culture of equity' within which pupils 'learn to disagree well'. The report also states how 'a culture of high expectation raises pupils' aspirations', enabling all to make 'progress which is at least good', including those with diverse needs. The 'wide range of opportunities which enables pupils to grow their talents and develop a love of learning' was also recognised, as was the way in which 'flourishing in or beyond school is widely celebrated, raising self-belief'. You can find a copy of the full report on our website or by visiting [SIAMS Inspection Reports](#)

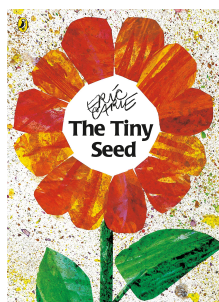
With Best Wishes,



Jayne Peacock
Executive Headteacher

What are we Learning in Raindrops and Saplings?

It was lovely to see the children returning to school smiling, confident and ready for learning following their Christmas break. They really have settled into school life and are enjoying all the opportunities it provides them.



Our topic over the spring term will be 'My world and me, plants and seasons'. The children will be looking at a wide variety of plants and will begin to identify, name and compare a range of plants both inside the classroom and outside within our lovely school grounds and local surroundings. They will be introduced to the story of 'The Tiny Seed' which follows the journey of a seed through each season and its stages of growth. This will be our key text for the half term. The story will help the children to question, explore and discuss the life cycle of a plant. They will consider what a plant needs to grow and use their knowledge to sow and care for their own seeds.

In maths the children will be working with numbers to and within 10. They will practise the skill of comparing groups of objects and use the mathematical vocabulary of, more than/less than and equal to, to explain two or more groups. The children will also be introduced to the part whole model to develop their understanding of splitting a whole into two groups and building on their fluency and recall of number bonds.

As always the children will have many play based activities and challenges within the classroom to revisit and build on both prior and present learning at their own pace. This helps to create an 'I will try' attitude alongside perseverance when things get a bit tricky, within the safety of their own environment, and will promote the enjoyment and pride of achievement.

We would like to thank you for taking the time to support your child/children at home with their learning through mathletics, literacy planet and daily reading. It really does make a difference to their enjoyment of learning, their understanding and in turn their overall progress.

We would like to wish you all a very happy 2024!

What are we Learning in Streams & Young Buds?

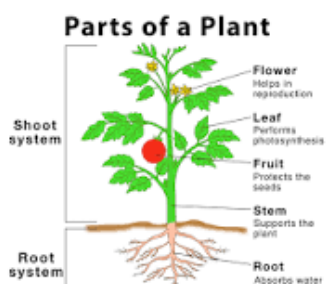
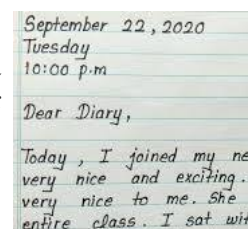
Welcome back! It has been lovely to welcome the children back after our busy Christmas celebrations, and see the children so settled and ready to learn, in what promises to be another busy term ahead.

This half term, we will be covering our History, Geography and Science.



In History, the children will be learning about changes within living memory. They will be learning about school life in the 1950's vs school life today, comparing and contrasting their own experiences with those of Grandparents. They will use their previous learning on timelines and chronology to assess where living memory falls on a timeline, sequencing historical photos and artefacts, considering the difference between fact and fiction, and then sequencing their own school day in comparison to an average 1950's school day.

In English, the children will use their historical learning to create their own diary entry based on a typical day in a 1950's school. They will use their understanding of correct past tense, consider what key features they should include for a diary entry, and finally use this as a way to demonstrate their understanding of life in schools in the 1950's.



In Science, the children will be studying plants and trees. We are excited to have organised a trip to Yeo Valley woodland, where the children will use their learning of plants and tree identification, to support them whilst they too, take part in planting their own trees as part of a community project. As part of this learning, they will be learning about the various parts of a plant and identifying a variety of common plants and trees, as well as exploring the ideal conditions for a plant to grow.

In Geography, Young Buds and Streams will revisit their learning on map reading; including atlases, globes and maps and apply this to their learning on the UK capital cities and oceans and continents.

In maths, the children will continue their learning on addition and subtraction with a main focus on subtraction. Many thanks to those who are supporting the children's use of Mathletics, this continues to support the children's fluency of application within lessons. Alongside this, the children will continue to access our fruit shops at breaktime, where they will use the shop money to purchase their fruit. This term will see us focus on them making the same amount in a variety of ways. To further support this, please do support them with any opportunities to purchase their own things, using cash, within the local shops when out and about. Finally, there is an ongoing focus on counting in 2's, 5's and 10's - Year 1 need to be able to skip count in this, whilst Year 2 needs to be able to apply this to times tables. If you would like to support this further, then any additional practice on games such as 'Hit the Button' will do this.

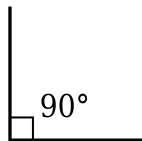
Many thanks in advance for your ongoing support and we are all excited for the upcoming term ahead.
Your KS1 team.

What are we Learning in Rivers and Oaks?

Happy New Year! Hope everyone had a good Christmas break.

This term we have plenty to get done and the children have come back raring to go!

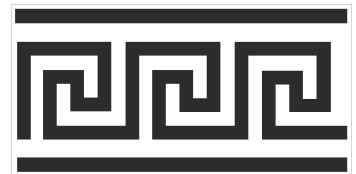
In English we are writing our own version of the classic Greek myth Theseus and the Minotaur. We will break down the story bit by bit and then create our own mythical beasts to tackle in place of the Minotaur. Alongside this we will be reading Percy Jackson and the Lightning Thief to further immerse ourselves in all things Ancient Greek!



In Maths, we're looking at the different sorts of angles we have and where in our world we can spot them. After this we will move into a consolidating unit on place value as this is a vital skill that runs through all aspects of maths. Tasks will be going onto Mathletics to complete every week which help to further embed the learning we do in the classroom.

In History this term we are covering all things Ancient Greece. We will research some of the many Greek Gods, discover how everyday life looked for an ancient Athenian and how the various Greek city states differed from one another and how they interacted.

Zooming out a little from Greece, in Geography we will be comparing Greece with other European countries such as the UK and others. How do they differ in population, culture and language? Taking the ancient Greek topic one step further, in art we will create our own Ancient Greek patterns using stencils and templates to replicate the "meander" pattern to form a border around a central piece taken from their story. The children will have a chance to use lino stamps to create some artistic effects.



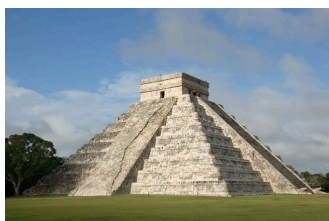
Overall it's all things Ancient Greece! It's a fascinating topic and one that the children will enjoy digging into.

What are we Learning in Oceans and Forests?

This half term we will be focussing on the Maya!

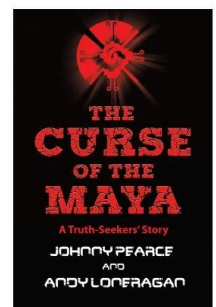
In guided reading, we will be studying myths and legends, particularly those of the Maya including the creation story. In literacy we will be reading 'The curse of the Maya' and rewriting the prologue focussing on building suspense.

In History, we will be learning about the Maya civilization and make comparisons to other geographical locations at the same period such as the Anglo- Saxons.



Our study of the Maya will move onto a geography unit, we will be comparing the physical and human features of Central American countries with that of the UK.

Finally, we will study the medium of 'print' in art to explore, practice and design our own Maya prints.



Away from our work on the Maya, we will be diving head first into fractions: it is a very 'meaty' unit which always challenges the class. To support your child, please spend time on Mathletics and keep practising times tables.

Admin News

Logs for Forest School

The new woodburner has been installed in the yurt at Kentisbury for the children's Forest School lessons and we would really appreciate any logs that you might be able to donate to the school. Any quantity large or small would be greatly appreciated.

Tesco Stronger Starts Scheme - In Store Vote (Tokens) for Forest School

We are pleased to tell you that we have been successful in securing an instore voting box in the various Barnstaple Tesco stores for customers to vote with the tokens provided. We would really like to be able to put a canopy over our BBQ area, so that the children are able to use the area to cook, whilst taking part in their Forest School lessons, using the outside space, whatever the weather. This would make such a big difference, bearing in mind the amount of rain

we seem to get in North Devon, so if you should be visiting Tescos between Mid January and the end of March, would you please pick up a token or two (or a few) and vote for our project. Thank you

Community News



The HANDi app offers simple and straightforward advice, for the following conditions in children:

- *diarrhoea and vomiting*
- *high temperature*
- *'chesty baby' illnesses, such as bronchiolitis, asthma and croup*
- *'chesty child' illnesses, such as wheezing and asthma*
- *common newborn problems*
- *tummy pain*
- *head injuries.*

The app takes you through a series of questions about the symptoms your child is experiencing and then advises on the best course of action, whether that's to treat at home, to make a GP appointment, or to head to A&E.

Each of the illnesses has a home care plan to help you provide the best support for your child, and give you confidence in caring for them when they are unwell.